

ARCHITECTURAL DIGEST

THE INTERNATIONAL MAGAZINE OF INTERIOR DESIGN

FEBRUARY 2006

BEFORE & AFTER



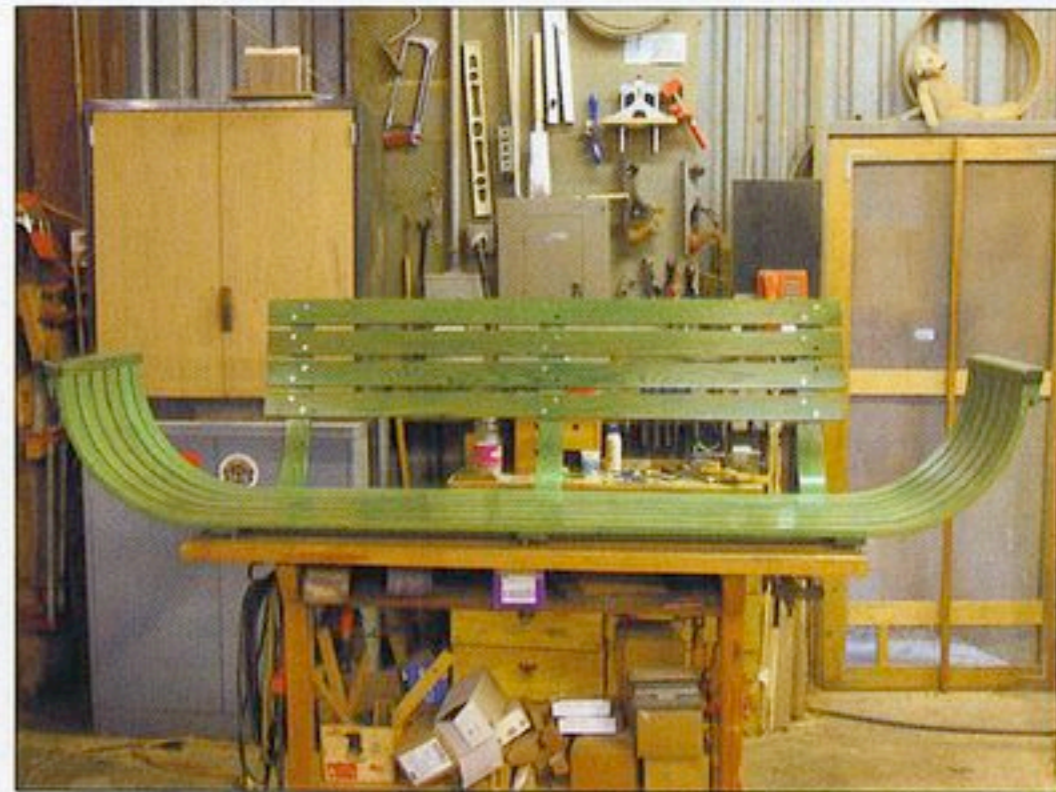
Lone Stardom



Above, the sinker-cypress Llano sofa; right, the Viking swing

Texas designer Marla Henderson's furniture is fashioned by master craftsmen and boatbuilders. Humble materials such as sinker cypress, a wood reclaimed from the bottom of rivers, are used with historical techniques such as steaming, traditionally used in boatbuilding, to create unusual pieces.

Marla Henderson Design Group
702 San Antonio St.
Austin, TX 78701; 512-495-1885
www.marlahenderson.com



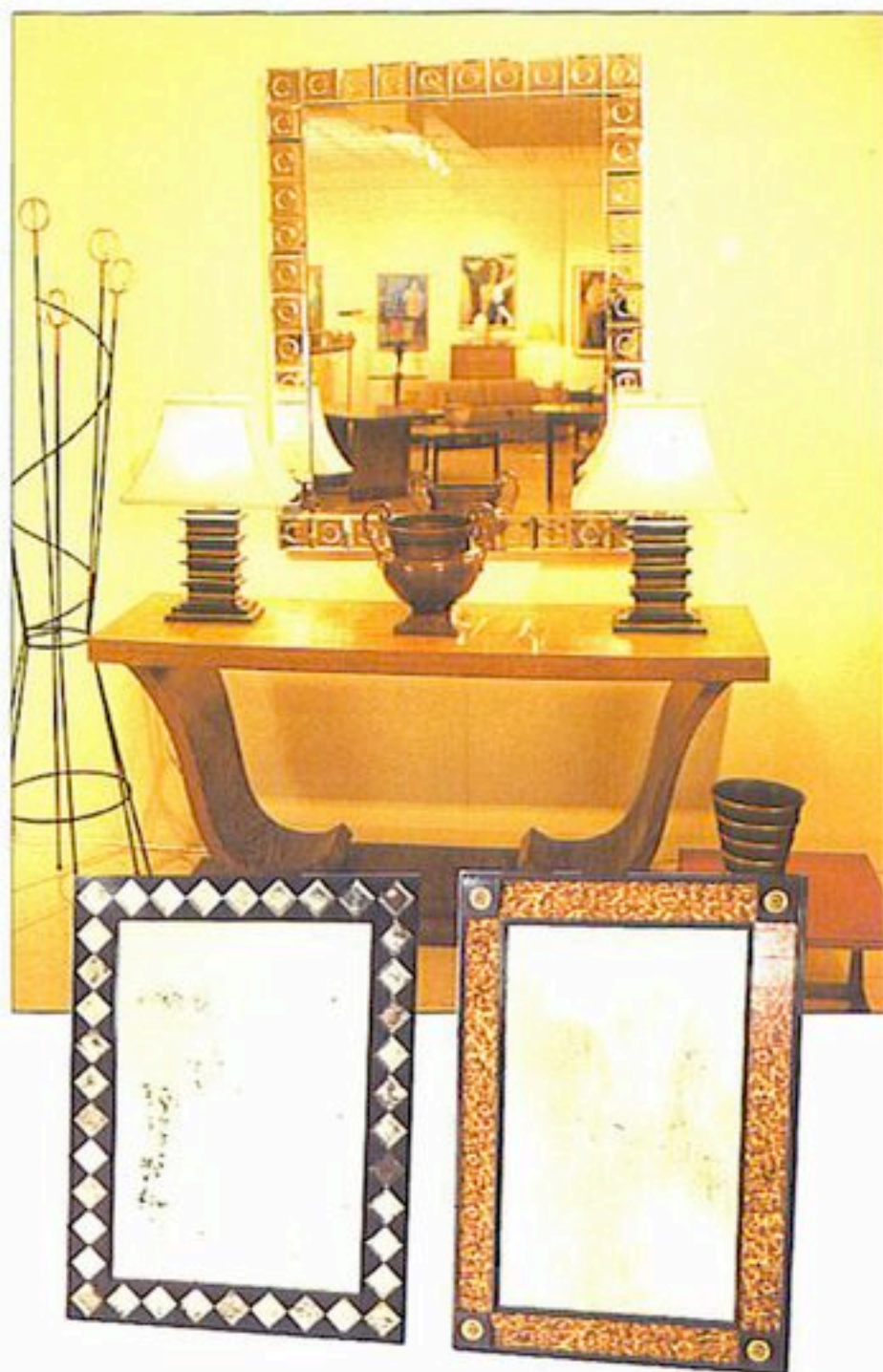
continued on page 180



More than Modern in Hudson

Frank Rosa's recent relocation to a 5,000-square-foot showroom in the heart of Hudson, New York, allowed him to expand his selection to more than midcentury modern. He has added limited-edition mirrors (right) designed by Larry Cottrell that are exclusive to **20th Century Gallery**. Sandra Nunnerley visits the showroom for items such as the 1930s Paolo Venini glass obelisks (above).

20th Century Gallery, 605 Warren St., Hudson, NY 12534; 518-822-8907



Lone Stardome



Above, the sinker-cypress Llano sofa; right, the Viking swing

Texas designer Marla Henderson's furniture is fashioned by master craftsmen and boatbuilders. Humble materials such as sinker cypress, a wood reclaimed from the bottom of a river, are used with atypical techniques such as steaming, usually used in boatbuilding, to create unusual pieces.

Marla Henderson Design Group
702 San Antonio St.
Austin, TX 78701; 512-495-1885
www.marlahenderson.com

